



**COOL DOG**  
WATER FOUNTAINS.COM

# DL-2000-BF-STE

Water Fountain w Bottle Filler, Dog Basin & Adult Basin, ADA friendly

Outdoor fountain ideal for parks and recreational areas. Powder-coated exterior over a corrosion-resistant, 300 Series stainless steel base material to provide protection from the elements.

## STANDARD FEATURES

- Corrosion-resistant base material provides the ultimate protection from the elements.
- Heavy-gauge construction with tamper-resistant screws that resist stains and corrosion.
- Vandal-resistant bubblers feature chrome-plated integral hood guard to prevent contamination from other users, airborne deposits and tampering.
- Laminar flow provides clean fill with minimal splash.
- Pet fountain features slow drainage for easy drinking.
- Available in 4 finishes.

## SPECIFICATIONS

- No Electrical Required
- Dimensions: 26" L x 31" W x 64" H
- Vandal Resistant Bubbler
- Floor Mount/Freestanding
- Weight: 184 LBS
- ADA Friendly

## FIVE YEAR WARRANTY



**FRESH WATER IS A MUST  
AT THE DOG PARK!**

# INSTALLATION INSTRUCTIONS

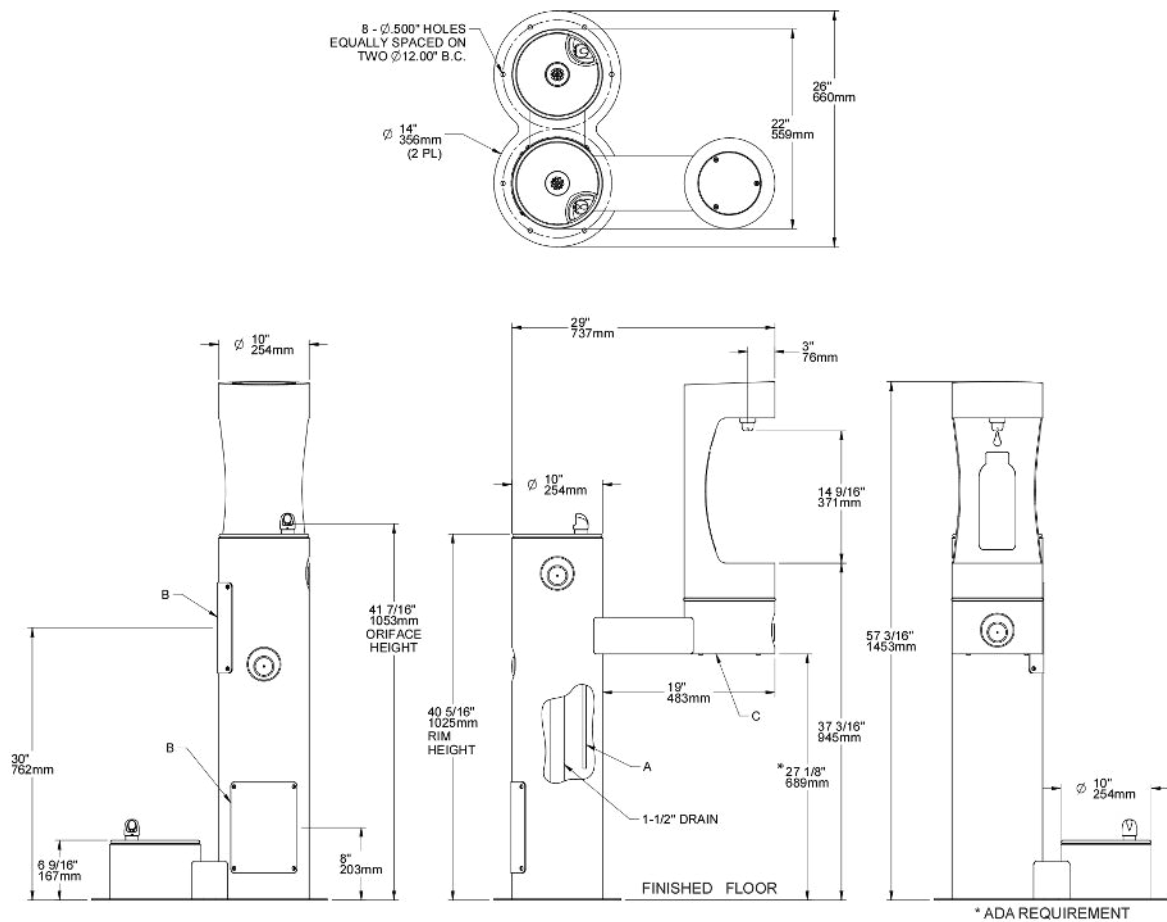
## IMPORTANT

ALL SERVICE TO BE PERFORMED BY AN AUTHORIZED SERVICE PERSON

## IMPORTANT! INSTALLER PLEASE NOTE.

THE GROUNDING OF ELECTRICAL EQUIPMENT SUCH AS TELEPHONE, COMPUTERS, ETC. TO WATER LINES IS A COMMON PROCEDURE. THIS GROUNDING MAY BE IN THE BUILDING OR MAY OCCUR AWAY FROM THE BUILDING. THIS GROUNDING CAN CAUSE ELECTRICAL FEEDBACK INTO A FOUNTAIN, CREATING AN ELECTROLYSIS WHICH CAUSES A METALLIC TASTE OR AN INCREASE IN THE METAL CONTENT OF THE WATER. THIS CONDITION IS AVOIDABLE BY USING THE PROPER MATERIALS AS INDICATED. ANY DRAIN FITTINGS PROVIDED BY THE INSTALLER SHOULD BE MADE OF PLASTIC TO ELECTRICALLY ISOLATE THE FOUNTAIN FROM THE BUILDING PLUMBING SYSTEM.

1. This fountain is to be mounted on a smooth, flat, finished surface with adequate support structure. NOTE: Mounting structure must be capable of supporting 300 lb. load on fountain.
2. Refer to rough-in for plumbing.
3. Install shut-off valve on water supply. (Valve not furnished)
4. Locate and install fountain using 3/8" minimum fasteners. (Fasteners not furnished)
5. Prior to installing the bottle filler to the center mounting position of fountain, insert the drain pipe (Item #15) by positioning the short end of drain pipe through mounting plate of bottle filler. Next, place the aesthetic collar (item # 29) onto the center mounting position of the fountain ensuring the vertical edge of the collar is upright and the curved edge sits below the mounting surface. Mount bottle filler to fountain with collar centered between the two pieces. Install bottle filler to fountain and secure with supplied hardware.
6. Prior to installing the bottle filler to the arm mount of fountain, insert the drain pipe (Item #14) into the arm tunnel and adjust drain to lean to the left side of the arm when facing the button. Next, place the aesthetic collar (Item # 29) onto the arm mounting position of the fountain ensuring the vertical edge of the collar is upright and the curved edge sits below the mounting surface. Mount bottle filler to arm with collar centered between the two pieces. Install bottle filler to arm being sure drain tube is above mounting plate of filler. Install filler to fountain and secure with supplied hardware.
7. Connect water supply and fountain drain. Connect drain waste "Tee" to fountain drain tubes. Connect outlet of "Tee" to drainage system. Water connection and drain must comply with local codes.
8. Turn on water supply and check all connections for leaks. CAUTION: This fountain is rated for inlet water pressure of 20-105 PSI. A pressure reducing regulator should be used if the inlet water supply exceeds 105 PSI. Any damage caused by reason of connecting this product to supply line pressures lower than 20 PSI or higher than 105 PSI is not covered by warranty.
9. Water supply 3/8" O.D. unplated copper tube. Waste 1-1/2" IPS. Contractor to supply waste trap and service stop valve in accordance with local code.
10. Connecting lines to be made of unplated copper and should be thoroughly flushed to remove all foreign matter before being connected to fountain. This fountain is manufactured in such a manner that it does not in any way cause taste, odor, color, or sediment problems.
11. Connect fountain to supply line with a shut-off valve and install a 3/8" unplated copper water line between the valve and the fountain. Remove any burrs from outside of water line. Push the tubes straight into the fittings until they reach a positive stop, approximately 3/4" (See Fig. 3). DO NOT SOLDER TUBES INSERTED INTO PLASTIC FITTINGS AS DAMAGE TO THE O-RINGS MAY RESULT.

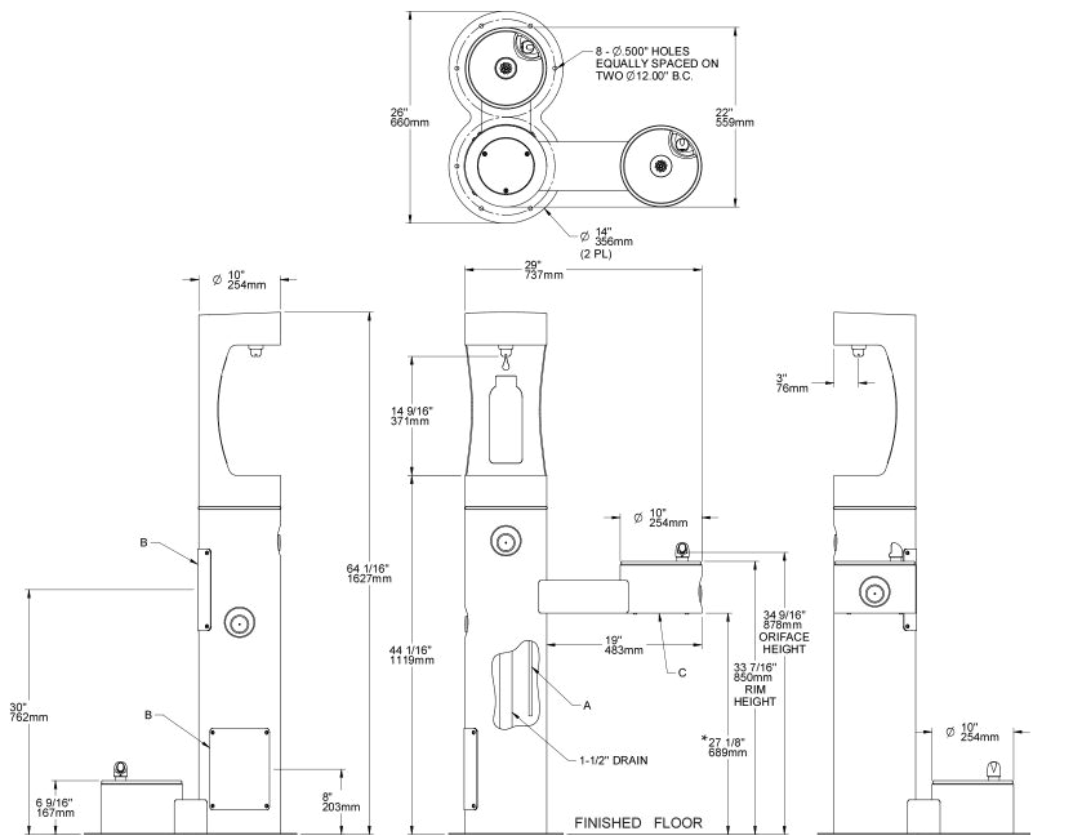


#### LEGEND

A = 3/8" O.D. UNPLATED COPPER TUBE CONNECT - SHUT OFF VALVE BY OTHERS

B = ACCESS PANEL ( 8" X 10" )

C = REMOVABLE BOTTOM COVER



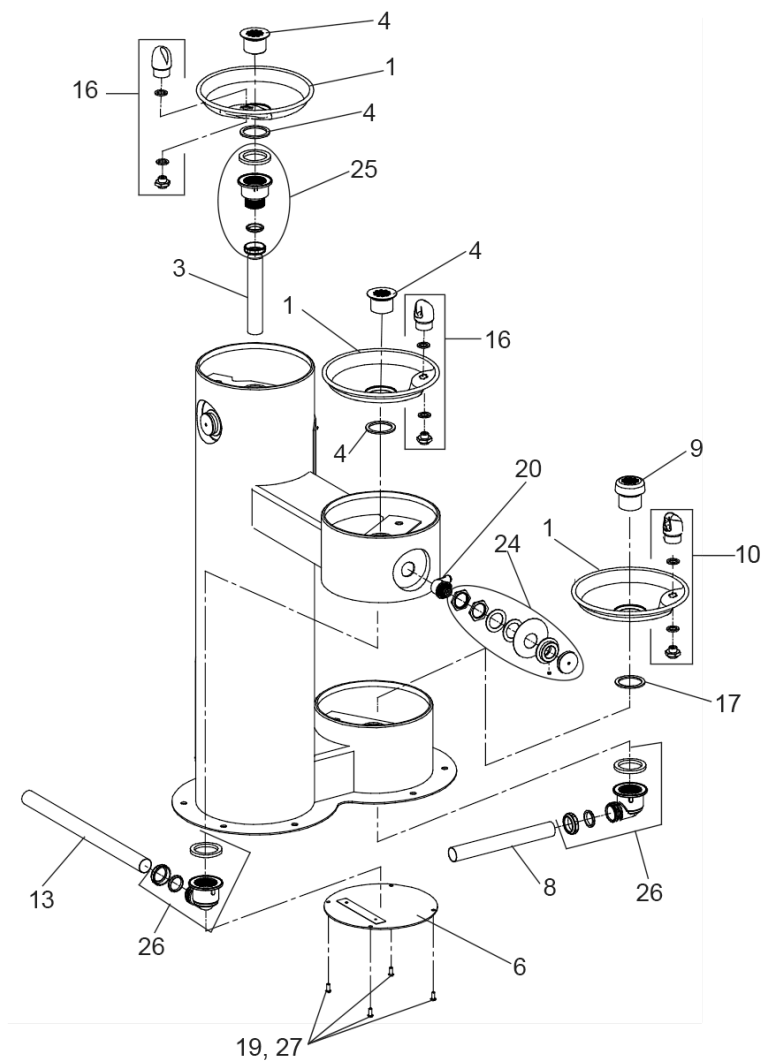
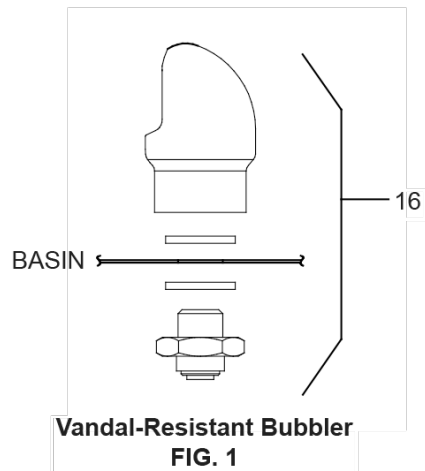
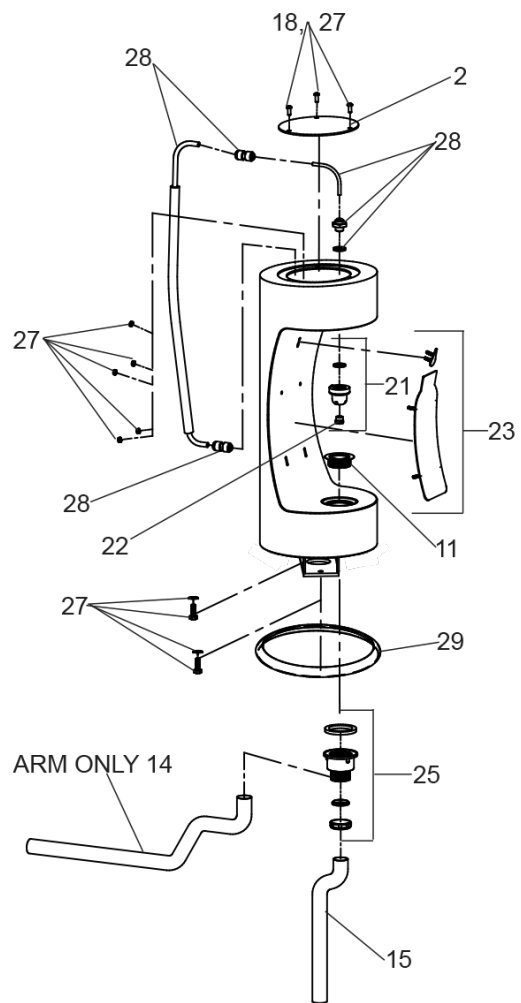
#### LEGEND

A = 3/8" O.D. UNPLATED COPPER TUBE CONNECT - SHUT OFF VALVE BY OTHERS

B = ACCESS PANEL ( 8" X 10" )

C = REMOVABLE BOTTOM COVER

\* ADA REQUIREMENT



## TROUBLESHOOTING & MAINTENANCE

### ACTUATION OF QUICK CONNECT WATER FITTINGS:

Fountain is provided with lead-free connectors which utilize an o-ring water seal. To remove tubing from the fitting, relieve water pressure, push in on the gray collar while pulling on the tubing. (see Fig.2) To insert tubing, push tube straight into fitting until it reaches a positive stop, approximately 3/4".

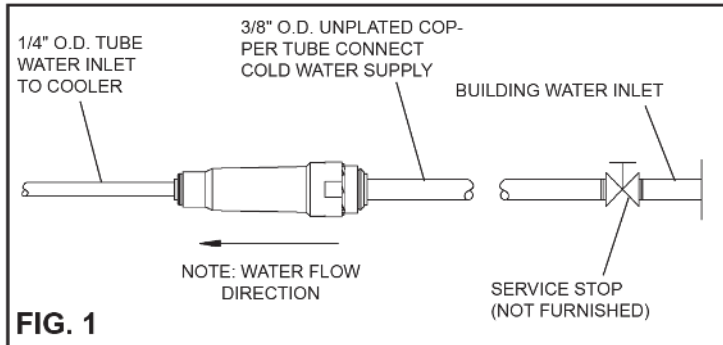


FIG. 1

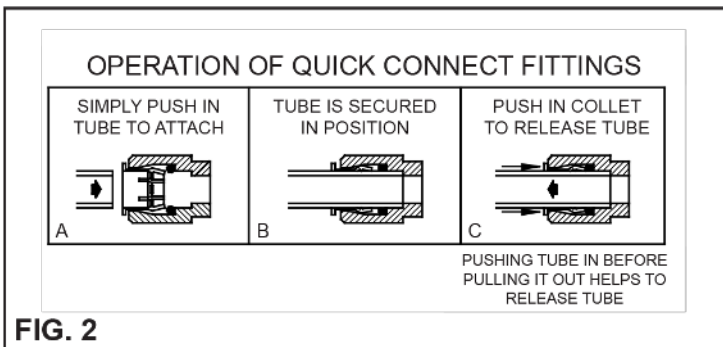


FIG. 2

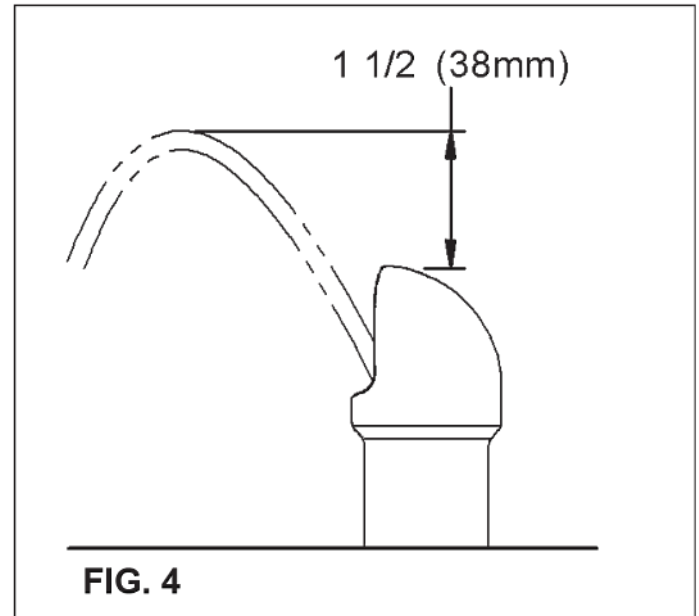
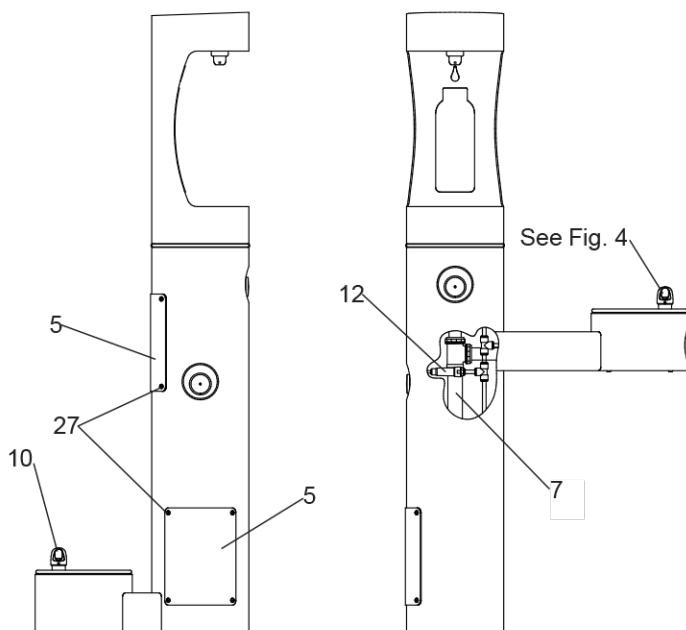


FIG. 4

### STREAM HEIGHT ADJUSTMENT:

Stream height is factory set at 35 PSI. If supply pressure varies greatly from this, insert a small straight bladed screwdriver through the access hole in the center of the push button and turn the adjustment screw. Clockwise adjustment will raise the stream and counterclockwise adjustment will lower the stream. For best adjustment, the stream should be approximately 1 1/2" above the top of the bubbler . (See Fig. 4)

### ITEMIZED PARTS LIST

ITEM NO.	DESCRIPTION
1	Basin
2	Cover - Round Plate
3	Tailpipe
4	Kit - Drain Plug/Gasket
5	Access Panel
6	Bottom Cover
7	Drain Tube - 1-1/2" x 27-1/2" Lg.
8	Tailpipe - 1-1/4" x 10"Lg.
9	Drain Plug 1-1/2" (Dog Bowl)
10	Kit - Bubbler (Dog Bowl)
11	Plug - Drain (BF)
12	In - Line Strainer
13	Drain Tube
14	Tube - Drain (Arm Only)
15	Tube - Drain
16	Kit - Bubbler (VR)
17	Gasket
18	Screw - 1/4"x20 x 3/4" LG. Pinned Torx
19	Kit - VR Torx Screws/Bit
20	Kit - 1.0 GPM Regulator (BF Only)
21	Kit - Nozzle
22	Kit - Aerator/Key
23	Kit - Blank Bottle Filler Trim
24	Kit - Bottle Filler Trim
25	Kit - Push Button w/Blank Nameplate
26	Kit - Push Button w/Nameplate
27	Kit - Push Button w/Nameplate
28	Kit - Plastic Drain
29	Kit - 90° Plastic Drain
30	Kit - 4400 Series Hardware
31	Kit - Bottle Filler Waterway
32	Aesthetic Collar
NS	Drain Tube (Not Shown)

NS = Not Shown